

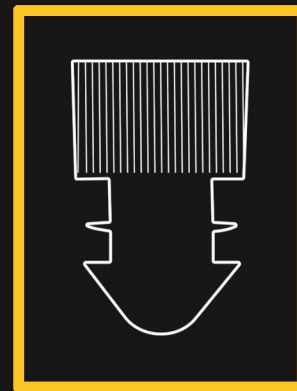


Pole Ideal Pars Co.

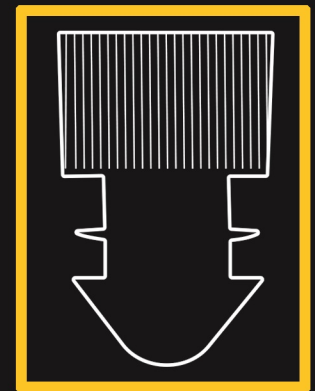
Winged Cap for test tube

www.medpip.com

- With two flexible flanges to ensure leakproof seal
- Available in various colors to facilitate classification
- Smooth and round-shape bottom, to prevent specimen from sticking
- Made from polyethylene (PE)



Ø 12 mm



Ø 16 mm



GS1 Code	Size	Cap model	Suitable for	Qty./pack
6260807502952	small	Push	12 mm test tubes (12x75mm, 12x100mm, ...)	200
6260807502976	Medium	Push	16 mm test tubes (16x100mm, ...)	200

1st floor, No.12, Naghdi St., Jahantab St., Motahari Ave. Tehran - Iran

Sales Office: +98 21 88545922

Tel: +98 21 88545922 - 9

Fax: +98 21 88767159

Postal Code: 1576635714

info@medpip.com

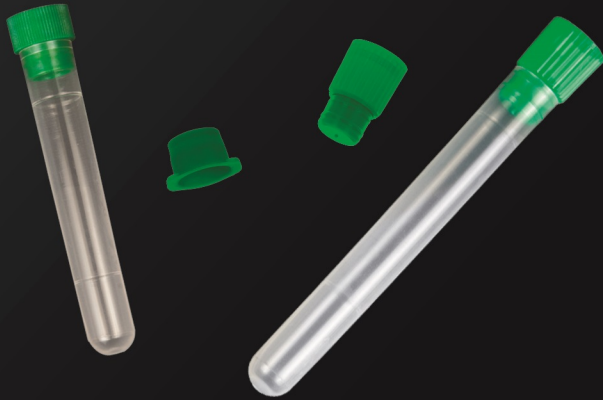
[@poleideal](https://www.instagram.com/poleideal) [@poleideal](https://www.facebook.com/poleideal) [+98 912 334 0197](https://www.linkedin.com/company/poleideal) [Pole Ideal Pars Co.](https://www.linkedin.com/company/poleideal)

Winged Cap for test tube



CBC Tubes

P.I.P. CBC Tubes are disposable and anticoagulant free. These tubes are in two models, made from polystyrene and polypropylene with two types of caps (snap cap made from polyethylene and push cap made from polypropylene). The bottom of these tubes are flat that makes them stable upright and also they are graduated.

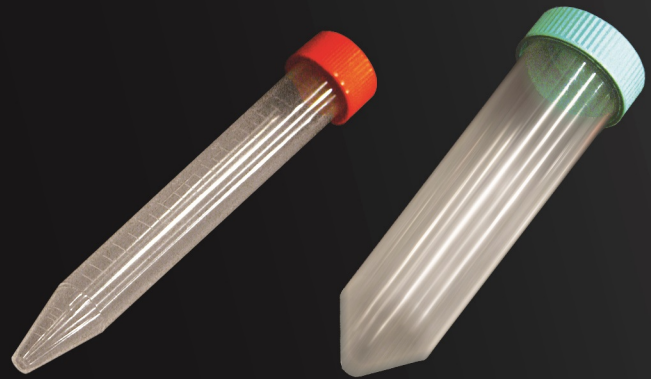


Simple Test Tube

These disposable tubes are made from transparent polypropylene and can be used for storing or transporting different samples. They are resistant to most of the common laboratory acids and chemicals. Simple test tubes are available in two sizes, with cap (push cap and snap cap) or without cap.

Conical Tube

P.I.P. Conical tubes are disposable and made from transparent polypropylene. These tubes are graduated and available in two sizes of 15ml (graduated up to 12) and 50ml for storing and centrifuging samples up to 6500 g (RCF). They are also autoclavable and freezable. These tubes have screw top lids in different colors and are resistant to most of the common laboratory acids and chemicals.



Round Bottom Tube

P.I.P. Round Bottom Tubes is disposable and available in two models of transparent and opaque. The transparent model is made from polystyrene which is sterilizable by Gamma irradiation, while the opaque model is made from polypropylene which is autoclavable and both models are sterilizable by ethylene oxide. These tubes are vastly used in immunoassay tests (RIA, EIA, ...) and can be also used for storing or diluting samples. Due to their dimensions, these tubes can be used in most laboratory and medical equipment with no need to change the tubes and this prevents losing samples while transferring them.